

O<sub>2</sub>

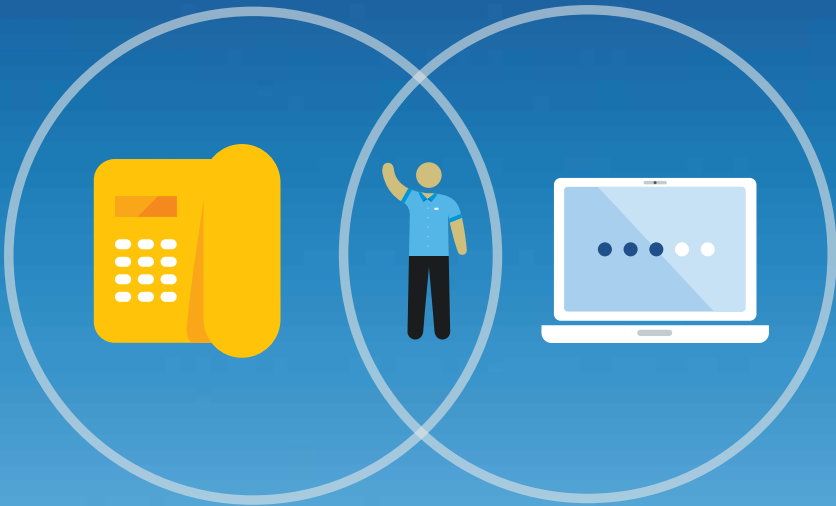
# Connect business

YOUR O<sub>2</sub> BUSINESS MAGAZINE

February 2012

## Your office broadband and landline from €39.<sup>99</sup> a month

Bring your business together with O<sub>2</sub>



### *Inside:*

Office landline and broadband from €39.<sup>99</sup>

O<sub>2</sub> brings you Microsoft Office 365 like no one else

Great rates on business phones

Get minute bundles for your landline phone

# Welcome

to the second edition of Connect business for 2012. Spring is in the air and we've got lots of stuff to green shoot cost savings into your business. Take the hassle out of dealing with different providers for your landline and internet costs - get both your office landline and broadband from just €39.<sup>99</sup> with us.

Like the idea of buying a bundle of landline and mobile minutes on the one plan? Read about O<sub>2</sub> Fixed Share it on page 8.

We've some great phones on offer, update you on what's new from O<sub>2</sub> and let you hear what one of our customers has to say on O<sub>2</sub> being their Total communications provider - Check out the Wexford Farmers Co-Op case study on page 4.

Enjoy the issue,  
The O<sub>2</sub> Business Team

## 5 Reasons to be with O<sub>2</sub>

### Cost control and flexibility

There are no surprises with our fixed monthly price plans. And get all the flexibility you need by adding and removing add ons as required.

### One bill

Get your landline, NGN broadband and mobile all together on one bill.

### Work while on the move

With O<sub>2</sub> Remote Worker you can have your own virtual private network connecting you with your office when you're out and about. Combine it with O<sub>2</sub> Mobile Broadband for just €19 per month on a 2GB Mobile Broadband price plan or for €23 per month for a 15GB Mobile Broadband price plan.

### O<sub>2</sub> Treats

Get your company on O<sub>2</sub> treats and have access to more customers. Or treat yourself and your team to daily treats like restaurant offers, beauty vouchers, store discounts and more. Register on o2.ie/treats.

### Priority Tickets

Get your tickets to The O<sub>2</sub> up to 48 hours before anyone else by registering on o2.ie. They're for our business customers to buy for themselves and their clients. When registering just tell us the types of music you like, and we'll send you a text or email when a gig you like is announced.

## What's new in O<sub>2</sub>

### 1 O<sub>2</sub> Fixed Share

We know you need extra value, choice and easy to understand pricing. With this in mind we give you O<sub>2</sub> Fixed Share - simply choose the amount of minutes from your landline you want to share among your business. You choose the bundle of minutes you need. You can do the same for your company mobiles with O<sub>2</sub> Mobile Share.

### 2 O<sub>2</sub> Mobile Share

With Mobile Share, you simply choose the amount of minutes from your mobile to share among the business. All the bundles available for you to choose from include free O<sub>2</sub> to O<sub>2</sub> calls. See page 10

### 3 Samsung Omnia and Microsoft Office 365®

The Omnia 7 is the first Windows® Mobile 7 phone from Samsung and it's perfect for availing of Microsoft Office 365® from O<sub>2</sub>. It's fully integrated with Outlook® email, and includes an Office suite for Excel, Word and PowerPoint editing. And with A-GPS support, it's everything you could ever need on your mobile, at the touch of a button.



### 4 Rugged Phones:



#### Motorola Defy+

Out on site all day? Exclusive to O<sub>2</sub>, the android Defy+ smartphone will handle normal daily use and abuse without breaking a sweat. The speedy processor will more than keep up with everyday tasks such as checking the news, typing emails and watching videos. Featuring a 3.7-inch display and a 5 MP camera it's scratch resistant, water resistant and dust proof.



#### Samsung Solid XCover

Designed to work in harsh conditions, it'll withstand the dustiest of building sites, and can even be submerged in water for up to 30 minutes at a depth of 1 metre. It also comes with a reliable 1300 mAh battery for long life, so you won't need to worry about losing power when you're out on the road. You can use it while wearing gloves and even has a built-in torch with dedicated on/off switch. If only it made the coffee too...



## Great rates on business phones

Get these business phones for €39.<sup>83</sup> (€49 inc VAT) on all first time connections with the Mobile Control price plan, now only €49 a month for unlimited calls and texts. See our Mobile Control price plan on page 9.



## Wexford Farmers Co-Op with O<sub>2</sub>



Mark Morrissey, Account Manager, O<sub>2</sub> and Ray Phelan, Group IT Manager, Wexford Farmers Co-Op.

Wexford Farmers Co-Op (WFC) moved its mobile business to O<sub>2</sub> at the end of 2009. This decision was taken on the basis of cost savings and service. Following O<sub>2</sub>'s entry to the fixed line and broadband market WFC adopted O<sub>2</sub>'s Fixed Line offering. This provides all mobile calls and texts, fixed broadband and fixed line calls in one plan, on one monthly bill.

"We liked O<sub>2</sub>'s approach", commented Ray Phelan, Group IT Manager, Wexford Farmers Co-Op. "They did not try to sell us an off the shelf product. They listened to what we wanted, not what they thought we should have. This is a refreshing approach."

As a result of the implementation of Fixed Line services the company has additionally been able to reduce the cost of fixed line telephone calls by up to 20% compared to its former provider.

***"O<sub>2</sub> listened to what we wanted, not what they thought we should have."***

As part of the service, O<sub>2</sub> provided a cloud based analyser tool for WFC. "The analyser tool allows Wexford Farmers Co-Op to evaluate calls by department or site location," commented Mark Morrissey, O<sub>2</sub> Account Manager. "They can see in one place and in real time their total telecom spend and can classify employee calls as business

**Find out how O<sub>2</sub> can help you reduce costs.  
Call us on 1850 200 732**

# Microsoft Office 365 and our O<sub>2</sub> techies

## Take your business to the cloud with full support

For just €5 a month,  
with any O<sub>2</sub> business  
plan, you can get  
Microsoft programmes  
on your smartphone  
or anywhere you have  
web access.

Whether you have  
twenty desks or just one.

Call 1850 200 732  
[o2.ie/office365](http://o2.ie/office365)

Together with



## About Office 365

### Take your business to the cloud with office 365

As the name suggests you can get access to your familiar Office desktop suite but the beauty of Office 365 is, it moves your mail server and office applications to the cloud.

So what does this mean for you?

- You could reduce your IT administration costs by moving your Office applications into the cloud.
- Our O<sub>2</sub> Techies are there to help with set up and also ongoing support day to day.
- You can hold online meetings and share your desktop for remote meetings.
- You can build your own websites, have a dedicated domain name for your website and email addresses if you don't have one already.

***'It improved my business to give people that work for me access, quite easily and flexibly, to material that I can't give them at the moment. The customer service I have received to date from the O<sub>2</sub> team has been excellent.'***

Andrew Mernagh, Mernagh Consulting

Office 365 is available from €5 per month in conjunction with O2 business mobile or fixed services. Usage costs are additional. Subject to device compatibility and network availability. Prices ex VAT. For detailed terms see [O2.ie/office365](http://O2.ie/office365).

# Office broadband and landline (Multi Line)

This package is for businesses who use our O<sub>2</sub> Release Multi or O<sub>2</sub> Mobile Share mobile price plans. With O<sub>2</sub> you can now build your own call bundles to landline and mobile numbers – these bundle of minutes will be shared among your company users – your decide!

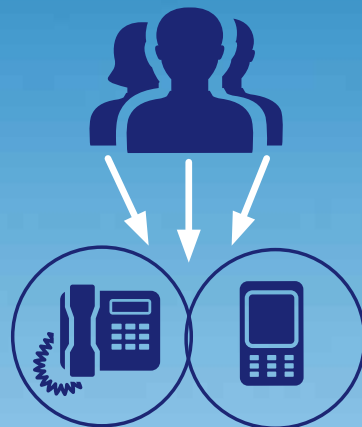
Landline	Peak Rates	Off Peak Rates	Rental	€ per month	Broadband	€ per month
Local & national calls	€0.03	€0.03	PSTN (single line)	€20.95	Up to 3MB	€15.00
Calls to O <sub>2</sub> Mobile	€0.12	€0.12	ISDN BRA (Dual channel)	€32.50	Up to 8MB NGN*	€20.00
Calls to all other Mobiles	€0.16	€0.16	ISDN FRA (16 channel)	€166.49	Up to 12MB	€25.00
Calls to UK Mobiles	€0.16	€0.125	ISDN PRA (30 channel)	€277.03	Up to 24MB NGN	€65.00
Calls to UK landlines	€0.03	€0.03			Up to 18MB	€65.00

Number of minutes to national and UK landlines	Price
250 shared minutes	€10
500 shared minutes	€15
750 shared minutes	€22
1,000 shared minutes	€28
2,000 shared minutes	€55
3,000 shared minutes	€75
4,000 shared minutes	€100
5000 shared minutes	€117
10,000 shared minutes	€210
20,000 shared minutes	€390
25,000 shared minutes	€495

Out of bundle rate 4c

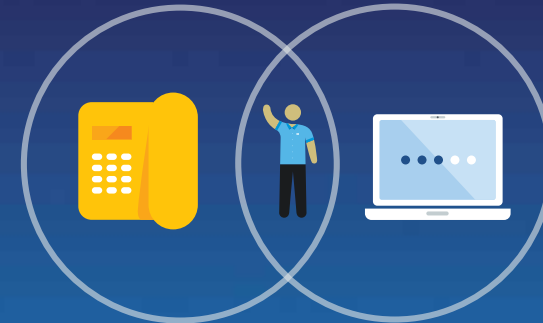
Number of minutes to national mobiles	Price
250 shared minutes	€35
500 shared minutes	€65
750 shared minutes	€95
1,000 shared minutes	€125
2,000 shared minutes	€240

Out of bundle rate 16c



# Office Broadband and Landline (Single Line)

Discount available on O<sub>2</sub> Mobile Control, O<sub>2</sub> Mobile Solo and O<sub>2</sub> Mobile Share price plans.



Broadband Speed	Up to 3MB	Up to 8MB NGN	Up to 12MB	Up to 24MB NGN	Up to 18MB
Normal Monthly Charge	€49.99	€49.99	€59.99	€79.99	€79.99
Monthly Charge with Total Business discount**	<b>€39.99</b>	<b>€39.99</b>	€49.99	€69.99	€69.99
Download allowance	Unlimited	40GB*	Unlimited	Unlimited	Unlimited
Landline Contract Length	12 months	12 months	12 months	12 months	12 months
Includes line rental	✓	✓	✓	✓	✓

From your landline	Up to 3MB	Up to 8MB NGN	Up to 12MB	Up to 24MB NGN	Up to 18MB
500 minutes of calls to O <sub>2</sub> Mobiles	✓	✓	✓	✓	✓
1500 minutes of local, national & calls to UK landlines	✓	✓	✓	✓	✓

\*8Mb NGN has a 40GB allowance. If you exceed your 40GB monthly usage allowance O<sub>2</sub> reserve the right to charge you for excess usage. Excess usage charge of 1c (ex VAT) per MB.  
Contract term is 12 months for new customers and 18 months for existing customers.

## O<sub>2</sub> Landline

Landline Only (PSTN)	Landline Only (ISDN-BRA)
<b>€39.99</b>	<b>€45</b>
- 500 minutes of calls to O <sub>2</sub> mobiles - 1500 free mins Irish & UK landlines - Includes line rental	- 500 minutes of calls to O <sub>2</sub> mobiles - 1500 free mins Irish & UK landlines - Includes line rental

# Business price plans

## O<sub>2</sub> Mobile Solo

Monthly Rental **€10**

### National calls to:

O2 Mobiles	<b>Included</b>
Text	<b>Included</b>
Up to 10 nominated landline numbers	<b>Included</b>
Landline	<b>14c</b>
Other mobiles	<b>14c</b>

Remember, with any of these business plans you can pick and choose, from the O2 Exact table on pg 6, which add on you would like to 'add on' to your business plan. Simple!

For other call charges, see o2.ie  
A fair usage policy applies.

## O<sub>2</sub> Mobile Control

Monthly Rental **€49**

### National calls to:

O2 to O2 Mobiles	<b>Included</b>
Text (National mobile and fixed)	<b>Included</b>
Other Mobiles	<b>Included</b>
Landlines	<b>Included</b>

Remember, with any of these business plans you can pick and choose, from the O2 Exact table on pg 6, which add on you would like to 'add on' to your business plan. Simple!

For other call charges, see o2.ie  
A fair usage policy applies.

## O<sub>2</sub> Release Multi

Monthly Rental **€25 per user**

Monthly Account Charge **€250**

### National calls to:

O2 to O2 Mobiles	<b>Included</b>
Other Mobiles	<b>Included</b>
Landlines	<b>Included</b>
Unlimited texts to Irish mobiles and landlines €10 per mobile number	

Remember, with any of these business plans you can pick and choose, from the O2 Exact table on pg 6, which add on you would like to 'add on' to your business plan. Simple!

For other call charges, see o2.ie  
A fair usage policy applies.

## O<sub>2</sub> Release Multi UK

Monthly Rental **€30 per user**

Monthly Account Charge **€250**

### National calls to:

Calls from Ireland to UK mobiles and landlines	<b>Included</b>
Calls while roaming on O2 UK to Irish/UK mobiles and landlines	<b>Included</b>

Remember, with any of these business plans you can pick and choose, from the O2 Exact table on pg 6, which add on you would like to 'add on' to your business plan. Simple!

For other call charges, see o2.ie  
A fair usage policy applies.

# O<sub>2</sub> Mobile Share

Free O<sub>2</sub> to O<sub>2</sub> calls on O<sub>2</sub> Mobile Share plans

500 shared mins €65 + €10 per user

750 shared mins €97 + €10 per user

1000 shared mins €120 + €10 per user

Additional minutes

2000 shared mins €240 + €10 per user

250 mins  
€30

500 mins  
€60

750 mins  
€90

2500 shared mins €280 + €10 per user

Additional minutes

3000 shared mins €336 + €10 per user

250 mins  
€28

500 mins  
€56

750 mins  
€84

1000 mins  
€112

2000 mins  
€224

4000 shared mins €448 + €10 per user

Texts 8c

Additional calls to national fixed lines and mobiles outside bundle 18c per minute. For other call charges see o2.ie

Larger bundles (up to 30,000 minutes) are also available.

Need extra add ons for Roaming, International Calls or Data? See O2 exact on page 8.

For more information visit an O<sub>2</sub> store or call our business team on 1850 200 732

# O<sub>2</sub> Exact

Create the business price plan that is as individual as you are.

This is different. O<sub>2</sub>Exact is a big idea that means you only pay for what you need. No matter what business plan you are on you can pick and choose exactly what suits your business today and change when your business needs it - simple!

You can build your office communications plan precisely around each person. For example you can add or remove your UK data, roaming or international call packages on an individual basis, month by month, as needed.



Ask in store, call 1850 200 732  
or visit [o2.ie/exact](http://o2.ie/exact)

# Exact Add ons

Available on all mobile plans

 <p><b>International</b> Expand your business worldwide with 10c calls to mobile and landlines in 66 countries including Russia, China, Brazil, India and South Africa.</p> <p>€5 per month</p>	 <p><b>UK Talk &amp; Text</b> Keep in touch with all your contacts in the UK with 250 minutes and 100 texts to any UK mobile or landline number.</p> <p>€10 per month</p>
 <p><b>UK Roaming Talk &amp; Text</b> Travelling to the UK? Check out our great value roaming Talk &amp; Text package: 100 minutes &amp; 100 texts to UK &amp; Ireland while roaming in the UK on the O<sub>2</sub> UK network.</p> <p>€10 per month</p>	 <p><b>UK Data Roaming</b> Travelling to the UK and using data? Get 250MB data while roaming in the UK on the O<sub>2</sub> UK network.</p> <p>€20 per month</p>
 <p><b>1GB Mobile Internet</b> Use your phone for mobile internet or as a broadband modem (tethering).</p> <p>€10 per month</p>	 <p><b>O<sub>2</sub> Travel</b> Make calls in 79 countries for just 18c per minute on any network plus a connection charge of 65c or 90c (depending on the country you're calling from). For the same connection charge, it's free to receive calls.</p> <p>Free to opt in</p>
 <p><b>Global Data Roaming</b> Need internet and email anywhere in the world? Get 100MB for €30, 250MB for €40 and 500MB for just €50 per month.</p> <p>From €30 per month</p>	 <p><b>Analyser</b> Next generation software giving you control over what you spend on mobile and landline, enabling you to maintain efficiency.</p> <p>From €25 per month</p>

# O<sub>2</sub> Travel

With O<sub>2</sub> Travel you can make calls in 79 countries for just 18c per minute on any network plus a connection charge of 65c or 90c (depending on the country you're calling from). For the same connection charge, it's free to receive calls.

Getting O<sub>2</sub> Travel is easy. Contact your Account Manager or call 1909 and we'll be happy to add this for you. Your authorised Account Contact can also log into My Account and sign up there.

All prices are ex VAT. See [o2.ie/travel](http://o2.ie/travel)

## Available in 79 countries

<b>To make a call:</b>	18c per minute
<b>Connection fee:</b>	65c/90c (depending on country)
<b>To receive a call:</b>	Free
<b>Connection fee:</b>	65c/90c (depending on country)

### See [o2.ie/travel](http://o2.ie/travel) for details

#### Countries with a 65c connection fee and 18c per minute

Austria	Luxembourg
Belgium	Malta
Bulgaria	Netherlands
Cyprus	Norway
Czech Republic	Portugal
Denmark	Poland
Estonia	Romania
Finland	Slovakia
France	Slovenia
Germany	Spain
Greece	Sweden
Hungary	French Guiana
Iceland	Guadeloupe
Italy	Martinique
Latvia	St. Barth & St. Martin
Liechtenstein	Martin
Lithuania	UK

#### Countries with a 90c connection fee and 18c per minute

Aruba	Jamaica
Albania	Macedonia
Algeria	Montenegro
Andorra	Montserrat
Anguilla	Morocco
Antigua & Barbuda	Netherlands Antilles
Armenia	Moldova
Azerbaijan	Russia
Barbados	Saint Kitts & Nevis
Belarus	Serbia
Bermuda	Seychelles
Bosnia & Herzegovina	South Africa
British Virgin Islands	St. Lucia
Canada	St. Vincent & Grenadines
Cayman Islands	Switzerland
Croatia	Trinidad & Tobago
Dominica	Tunisia
Dominican Republic	Turkey
Egypt	Turks & Caicos Islands
Faeroe Islands	Ukraine
Georgia	USA
Grenada	Australia
Israel	New Zealand

#### O2 Mobile Solo

The O2 Mobile Solo price plan is available to new business customers subject to status and credit check on a minimum term contract as agreed when contracting. Existing eligible business customers may migrate to the O2 Mobile Solo at any time provided such customers agree to enter a new 18 month contract. The monthly charge is €10. Calls to Irish mobiles/ landlines are 14c per min. Includes text to Irish mobiles, O2 to O2 mobile calls and calls to 10 nominated landlines per account. A minimum term applies and early termination charge is €50 for each month remaining. Excludes roaming and fair use applies. See [o2.ie](http://o2.ie) for detailed price plan information.

#### O2 Mobile Control

The O2 Mobile Control price plan is available to business customers subject to status and credit check. An 18 month contract minimum term applies and the early termination charge is the monthly charge per month remaining. The monthly charge is €49 and the price plan includes Calls and texts to Irish mobiles & landlines. O2 Mobile Control customers can also avail of a 1GB data add on and the monthly charge is then €59. Excludes roaming and fair use applies. See [o2.ie](http://o2.ie) for detailed price plan information.

#### O2 Multi

Monthly account charge is €250 and monthly charge per mobile is €25 (ex VAT). Free calls to Irish mobiles, landlines & voicemail. Text to Irish/Intl mobiles are 8c. Fair use applies. Min term applies & early termination is account charge & monthly mobile charge per month remaining. Excludes roaming and fair use applies. All customers services must switch to avail of this price plan. See [o2.ie](http://o2.ie)

#### O2 Multi UK

Monthly account charge is €250 and monthly charge per mobile is €30 (ex VAT). Free calls to Irish mobiles, landlines & voicemail. Also includes calls while roaming on O2 UK network only. Charges apply on other UK networks and all other roaming. Text to Irish/Intl mobiles are 8c. Fair use applies. Min term applies & early termination is account charge & monthly mobile charge per month remaining. Fair use applies. All customers services must switch to avail of this price plan. See [o2.ie](http://o2.ie)

#### O2 Mobile Share

The O2 Mobile Share price plan is available to business customers subject to status and credit check on a 12 or 18 month minimum term as agreed when contracting. The Monthly charge is the O2 Mobile Share bundle charge and €10 monthly charge per user. Bundle minutes are shared across users on the account on national landline and mobile calls. Texts to Irish/Intl mobiles are 8c. A minimum term applies and early termination charge is €35 per mobile for each month remaining. Customers can also avail of a 1GB Data Add on or Text Add on. The cost for an Add on is €10 per mobile per month. Excludes roaming. See [o2.ie](http://o2.ie) for detailed price plan information. All O2 to O2 calls are free.

#### O2 Exact Add Ons

Business UK Talk and text, 1GB data and remote worker inclusive allowances are for ROI use and exclude roaming. UK Data Roaming and Talk and Text Add ons are for use on the O2 UK network only. Charges apply for usage in excess of add on allowances. International add on applies to select destinations. O2 travel connection fees are country dependant. Charges exclude VAT. For terms and details see [o2.ie](http://o2.ie)

#### Office 365

Office 365 is available from €5 per month in conjunction with O2 business mobile or fixed services. Usage costs are additional. Subject to device compatibility and network availability. Prices ex VAT. For detailed terms see [o2.ie/office365](http://o2.ie/office365).

Unless otherwise stated all prices are quoted ex VAT and all information is correct at time of printing 23/1/12.

# Make the connection

## Business customers first time to the network

### Proof of Identity:

(must be photo-based), only one required

Passport Driving Licence

C2 card

Social services card

European Identity Cards  
or  
Photo visa

Birth Certificate

Credit card/Laser card  
(Copy both sides)

Garda National  
Immigration Card

Sealed work ID cards

FÁS Safe Pass

(All proof of identity must be valid and in date)

### And one of the following

(must be dated within the previous 3 months)

Company Purchase Order / Letter of Authority on headed paper / Utility Bill posted to the company



## Business customers moving from another network

### Proof of Identity:

(must be photo-based), only one required

Passport Driving Licence

C2 card

Social services card

European Identity Cards  
or  
Photo visa

Birth Certificate

Credit card/Laser card  
(Copy both sides)

Garda National  
Immigration Card

Sealed work ID cards

FÁS Safe Pass

(All proof of identity must be valid and in date)

### And one of the following

(must be dated within the previous 3 months)

1 month account statement or the most recent invoice from existing network showing: details of address, details of porting numbers, account holder details, payment history summary & invoice date.

*If porting your number to O2 from another network, we'll ask you for some details for our Customer Authorisation Form and only if required, a Letter of Authority. In no time at all you'll be using your new O2 SIM card with your existing number. Simple!*