

# O2 Connect for Mac OS

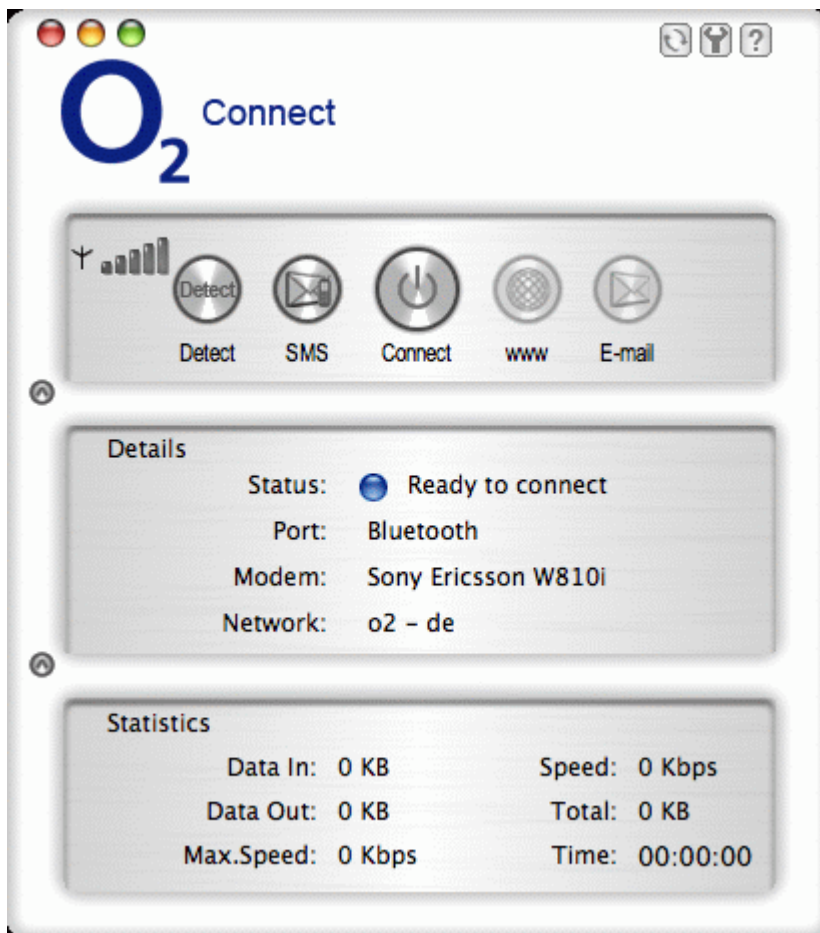
## 1 Starting O2 Connect for Mac OS

O2 Connect offers everything you need to manage the mobile Internet communication on your Laptop:



- Internet connection and Email download
- SMS Manager
- Managing contacts from SIM and Outlook

After installing O2 Connect a new entry will be placed in the program menu. Straight after installation the main window of the application is visible on your screen. If this is not the case you can start the application from "Applications -> O2 Connect". Whenever the application is active a status icon will also appear in the dock.

The main window of O2 Connect is at the heart of the application. Here you can see the status of your O2 Connect, how much time you have spent on the internet and which data throughput you should expect. You can connect to the internet and send emails or short messages from this window. You will find the following buttons and symbols on the main window:



[Image 1]

The main application is split into three areas. By tapping on the buttons   you can expand/collapse the window areas:

- Area "Menus and Connection Management"
- Area "Details"
- Area "Statistics"




## 1.1 Area "Menus and Connections"






[Image 2]

This area is split in 3 subareas:







Area A

	Closes the application
	Minimize
	Maximize Expands the application fully so that all three window areas are shown. You can restore the previous view by clicking this button again

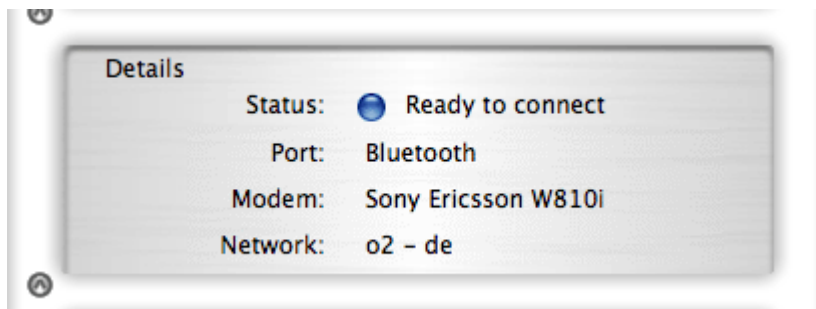
Area B

Icon	Description
	Update database <ul style="list-style-type: none"> <li>• Update database (roaming partner)</li> </ul>
	Settings <ul style="list-style-type: none"> <li>• Profile (managing your profiles)</li> <li>• Network (selecting connection and network)</li> <li>• History (data volume transferred)</li> <li>• PIN (PIN settings)</li> <li>• Info</li> </ul>
	Help

Area C





Icon	Description
	Indicator of network signal strength
	Detect Button enabled only if your are not connected to the Internet. Tap on this button to detect your hardware and network parameter
	SMS Button only enabled if no mobile Internet connection is active. Opens the integrated SMS application
	Connect Button to connect or disconnect
	Web Link button to preferred browser
	Email Link button to preferred Email application

## 1.2 Area "Details"

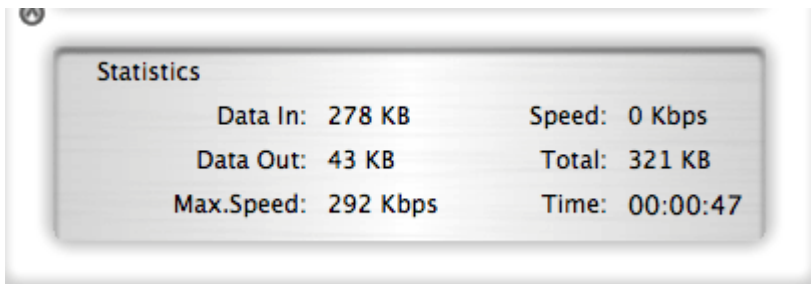


[Image 3]

Details about your connection

Label	Description
Status	 Connecting to modem
	 Ready, you can establish connection
	 Connected
	 Failure
Port	Port of detected device
Modem	Name of detected modem
Network	Network name and network mode

## 1.3 Area "Statistics"



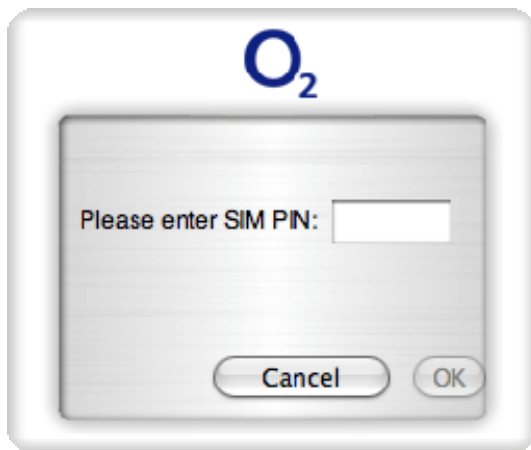
[Image 4]

Statistics provide advanced information about your connection. All shown data values are approximate values.

## 2 Connection

1. Insert your data card or connect your mobile phone via USB cable, Bluetooth or Infrared to your computer and wait until your operation system recognizes the data card/mobile phone.
2. Launch O2 Connect and wait until detection has been completed. If you see a detection problem, please reinsert your data card/reconnect your mobile phone and tap on the detect button. First time using the software this can take about 2 minutes. In case you're using a modem card and if Pin security is active, a window will pop up asking you to enter your SIM PIN. In case you're using a mobile phone please make sure it is switched on and registered to a network.

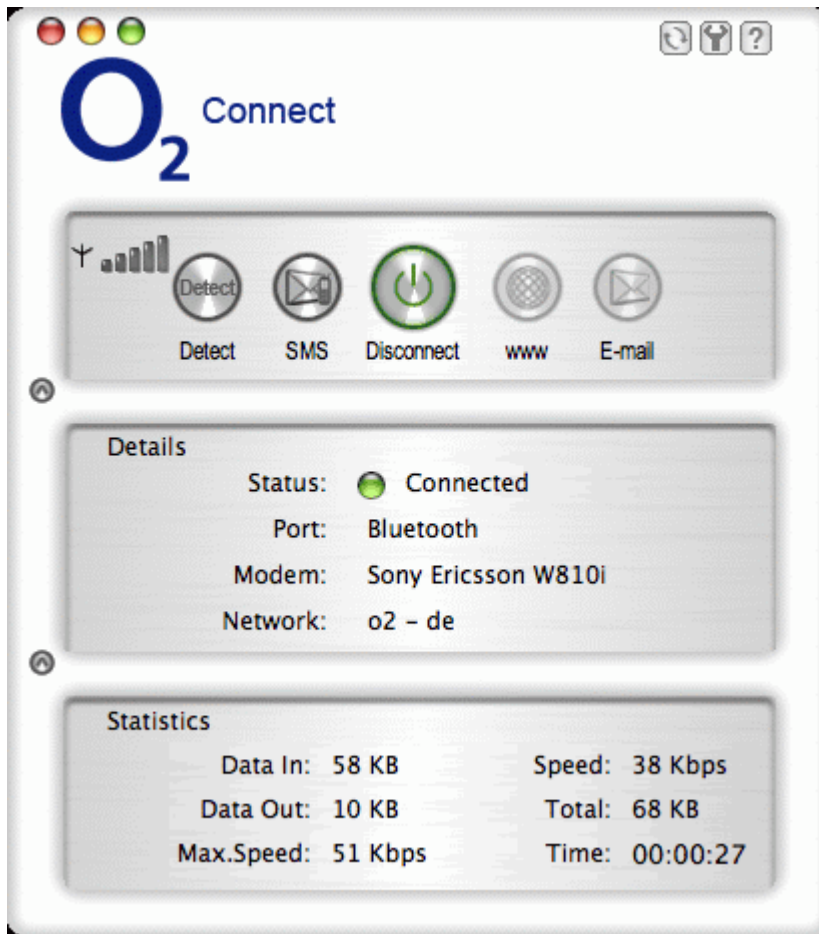
You can deactivate PIN security in the application if no connection is active: Settings -> PIN -> Deactivate PIN (for modem cards only).



[Image 5]


3. By default the software comes with a predefined connection profile. But you can modify the access details by selecting the "Settings" menu.

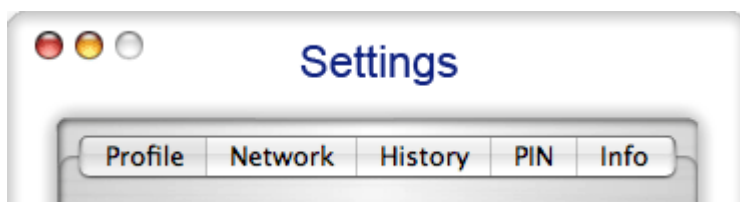
- Now tap on the connect button. That's it.



[Image 6]

## 3 Settings

To access the Settings menu tap in main window on the button .

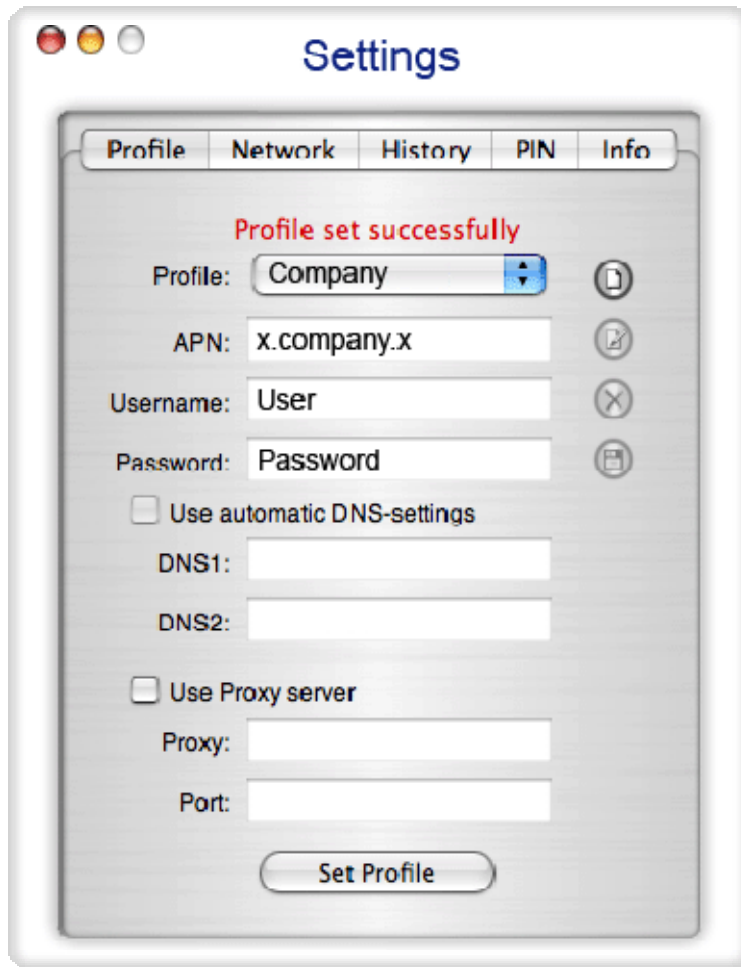


[Image 7]





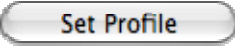
1. Profile
2. Network
3. History
4. PIN
5. Info

### 3.1 Profile

You are free to create your own connection profile. Once a new profile has been created it will appear in the dropdown menu Profiles. You can select it by tapping on Set Profile to use it.



[Image 8]

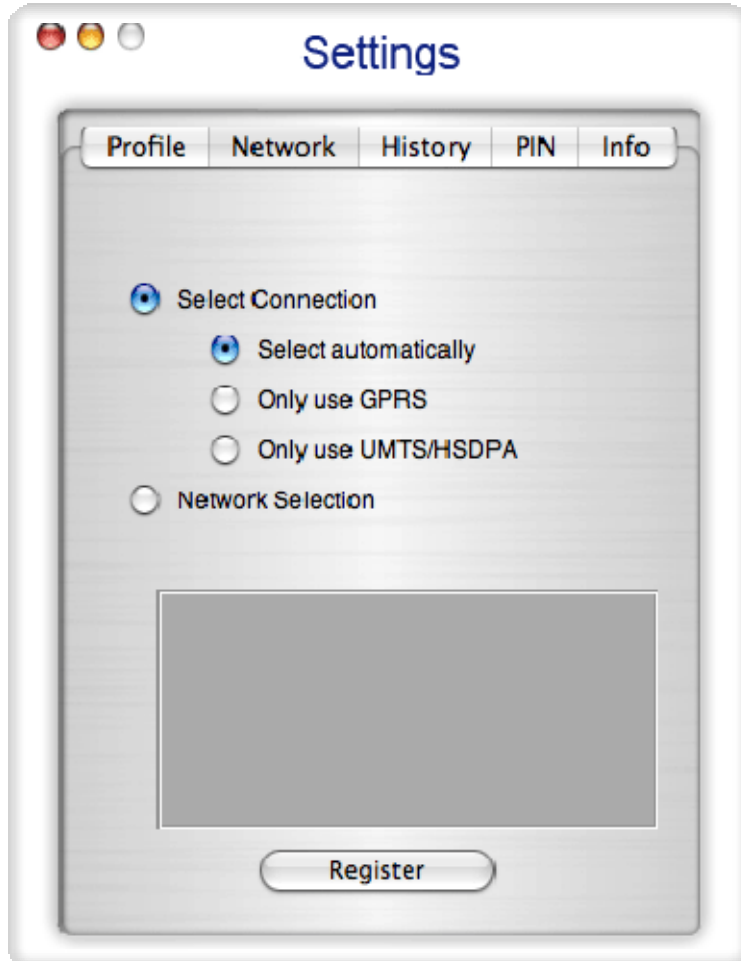
Button	Description
	Create a new profile
	Edit a current profile
	Delete a profile
	Save a profile
	Set the Profile you want to use

Label	Description
Profile Name	Profile name, should be unique
APN	Access Point Name of your network operator. For more details contact your network operator.
Username	Username. For more details contact your network operator.
Password	Password. For more details contact your network operator.
DNS	Domain Name Server. For more details contact your network operator.
Proxy settings	Necessary Proxy Settings of your network. For more details contact your network administrator.

## 3.2 Network

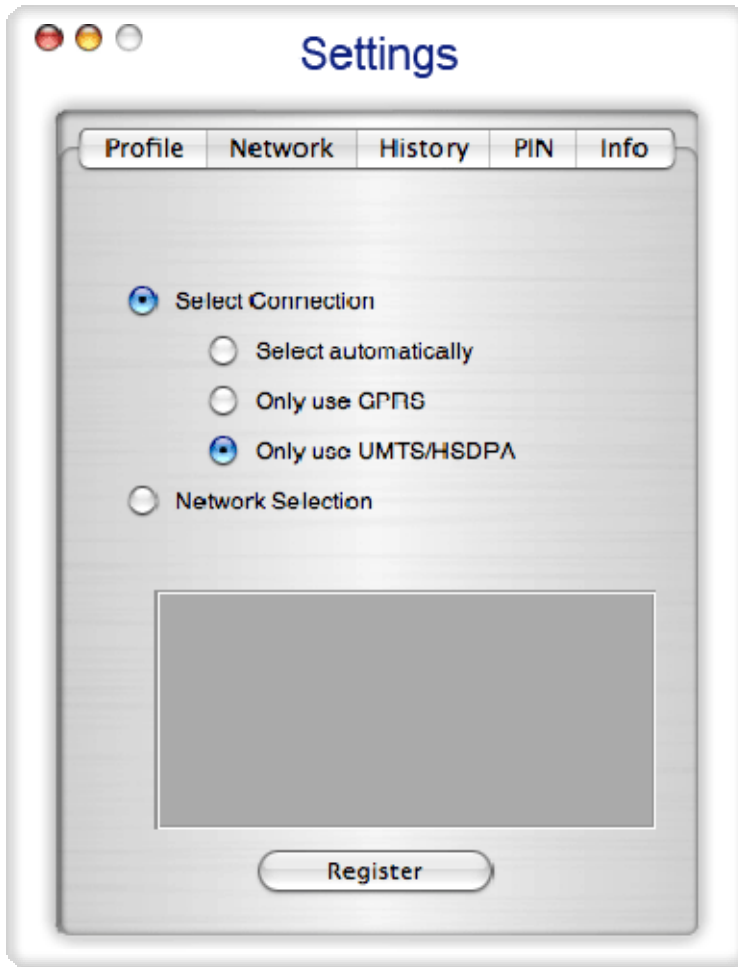
You are offered two options: "Select Connection" and "Select Network". PLEASE NOTE: These settings are only applicable when using a modem card. If you use a handset all the settings have to be set manually on the phone.



[Image 9]

6. Select Connection
7. Select Network

### 3.2.1 Select Connection



[Image 10]

Three different settings are available here:

Label	Description
Select automatically	Selects the best suited network available
Only use GPRS	Use only GPRS for a connection
Only use UMTS/HSDPA	Use only UMTS/HSDPA for a connection.

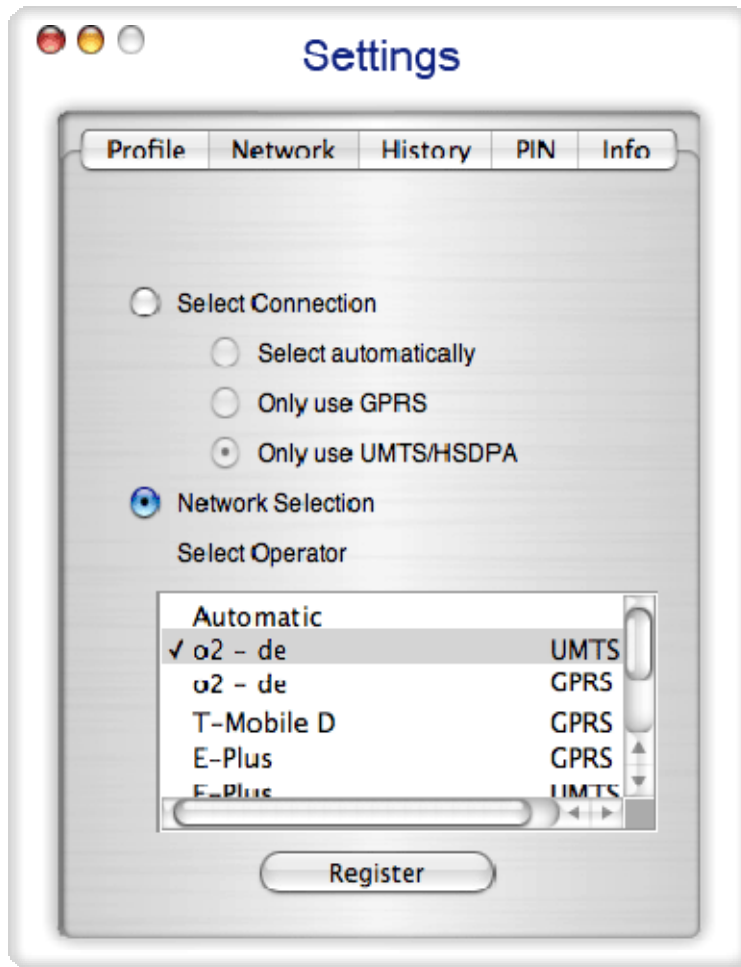
Select and tap Register. If the change is successful you will retrieve a message "Network changed successfully".

Close the window and wait until you see signal strength in the main window. After that you can establish a connection.

**PLEASE NOTE:** Changing the connection mode can block your data card. If you cannot establish an internet connection, take out the data card, close O2 Connect, reinsert the data card, restart O2 Connect and tap on detect. Wait until you see the signal strength in the main window. Now you can establish the connection.

### 3.2.2 Select Network

In this dialog you may select any available network. It is useful when you are abroad. Automatic mode will select the preferred network of your network operator.



[Image 11]

If you select Network selection you will get a list of network options.

8. Automatic Selection
9. Retrieving Networks...

The marked network is the network you're currently registered with.

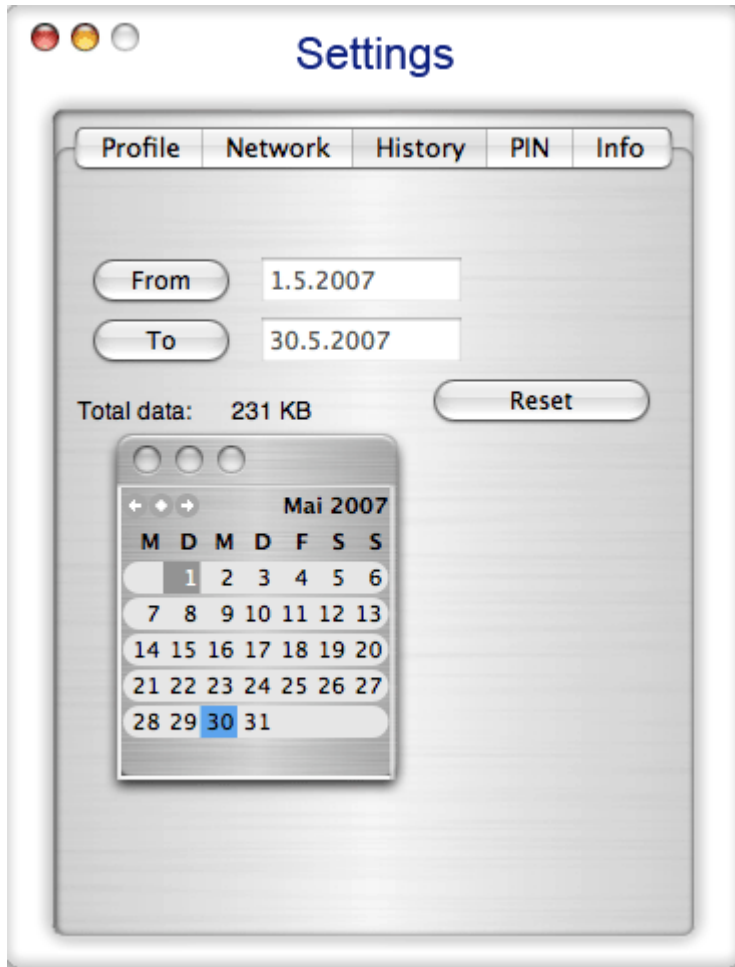
**PLEASE NOTE:** The network list will only appear if the connection settings is "Only use GPRS" or "Only use UMTS/HSDPA".

Select the network and tap on the register button. If the change is successful you will see the message "Network changed successfully".

Close this window and wait until you see the signal strength in the main window, then you can establish the connection.

### 3.3 History

Select a time frame to see sent/received data volume. Tap on "Reset" to reset the counter.



[Image 12]

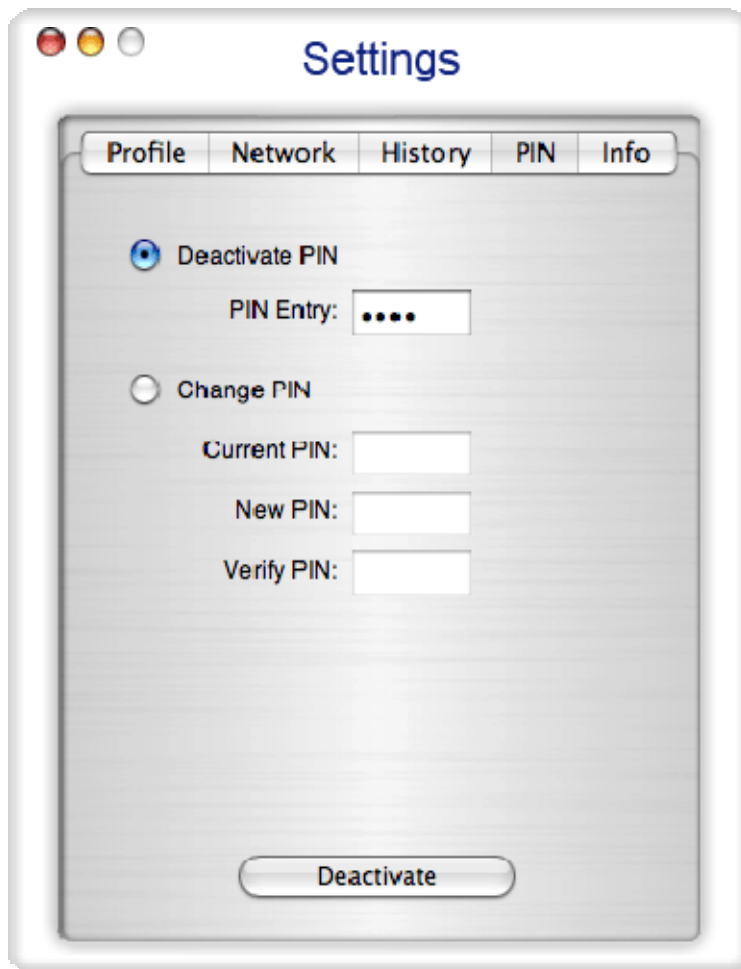
## 3.4 PIN

You can Activate/Deactivate PIN or Change PIN.

10. Activate/Deactivate PIN
11. Change PIN

### 3.4.1 Activate/Deactivate PIN

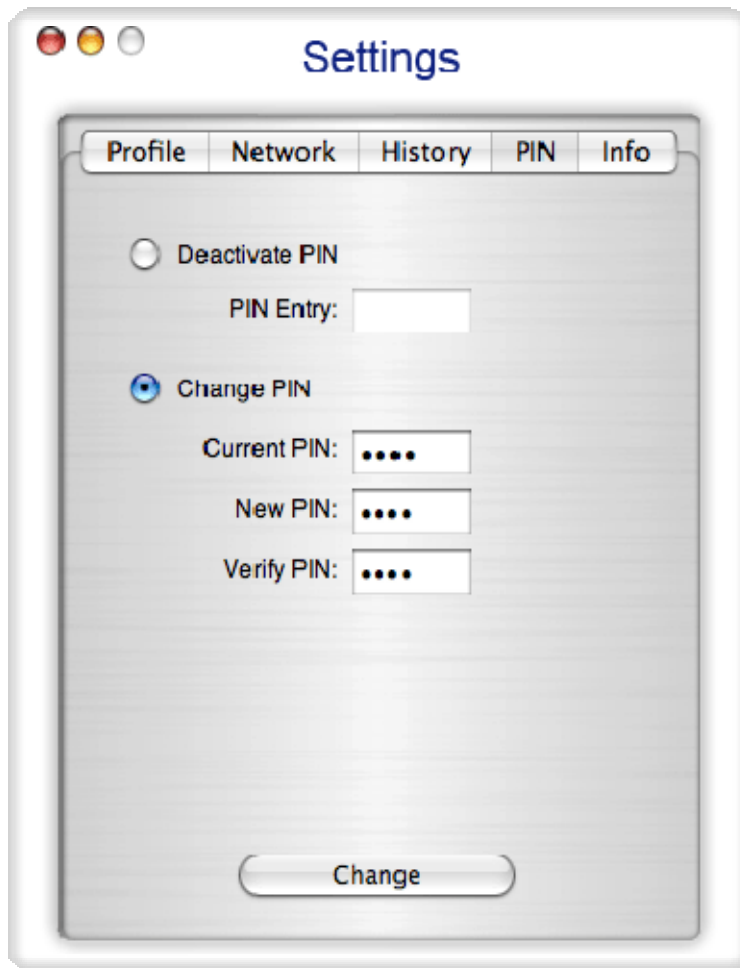
Usually you have to enter the PIN each time you start O2 Connect using a modem card. Deactivate the PIN to obviate doing this each time.



[Image 13]

### 3.4.2 Change PIN

This dialog lets you change your PIN.

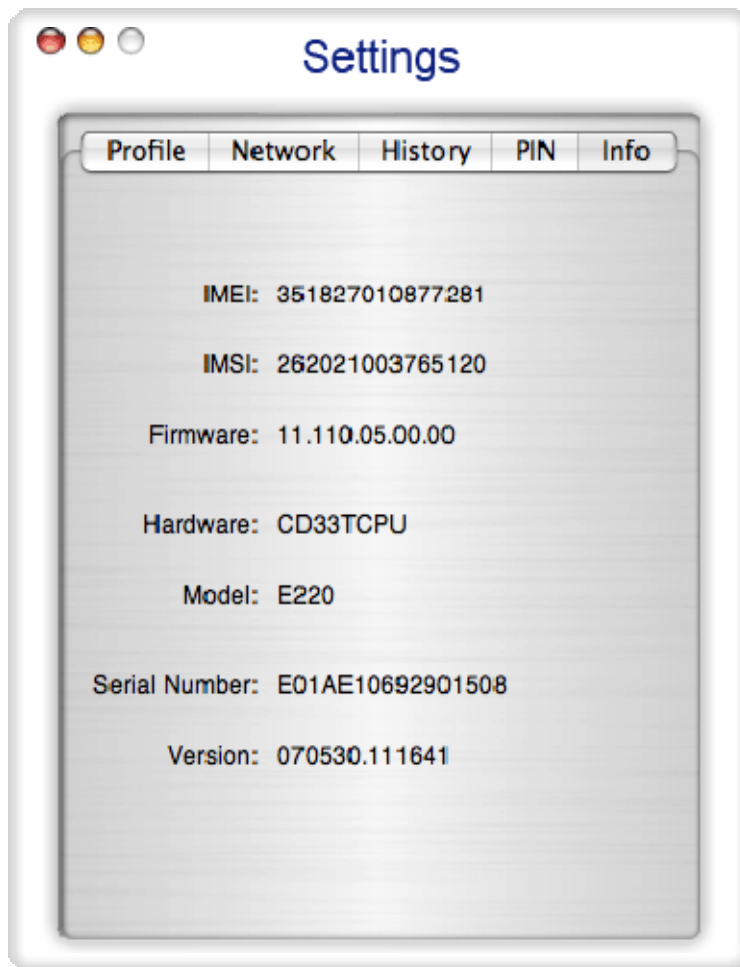


[Image 14]

Label	Description
Current PIN	Enter your current PIN
New PIN	Enter your new PIN
Verify PIN	Enter once again the new PIN

## 3.5 Info

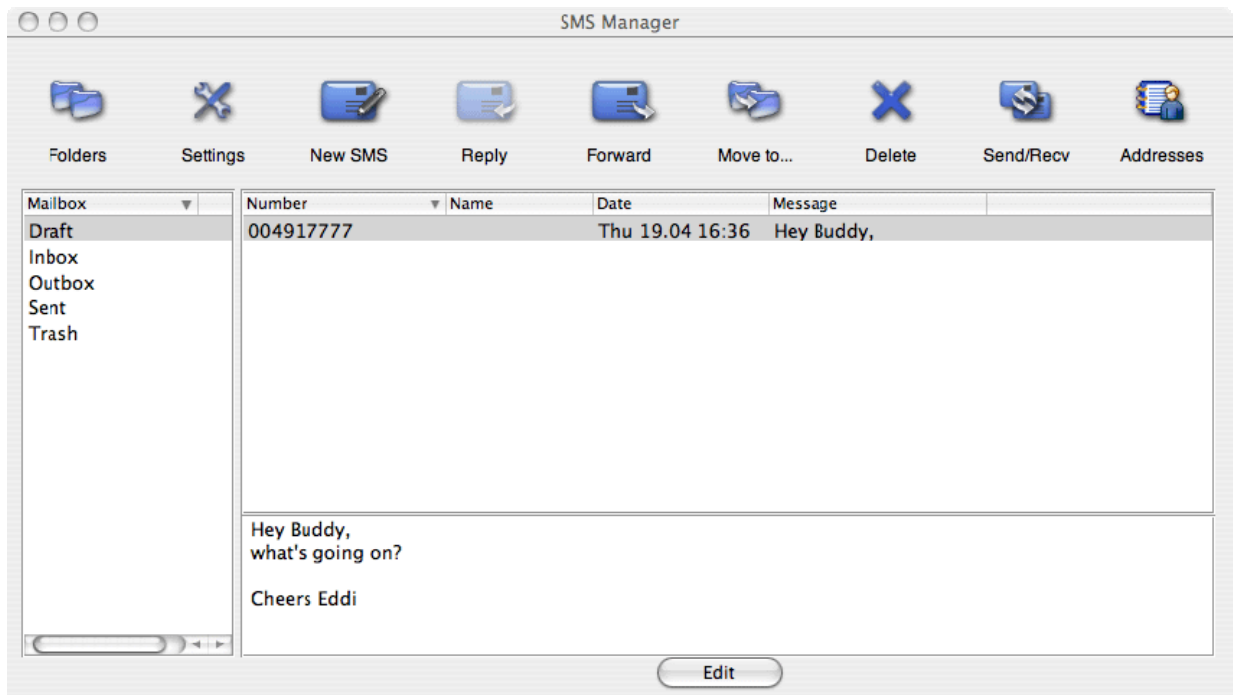
Modem System Information



[Image 15]






## 4 SMS





PLEASE NOTE: SOME DEVICES DO NOT SUPPORT ALL FEATURES OFFERED BY THIS SMS MANAGER.



[Image 16]

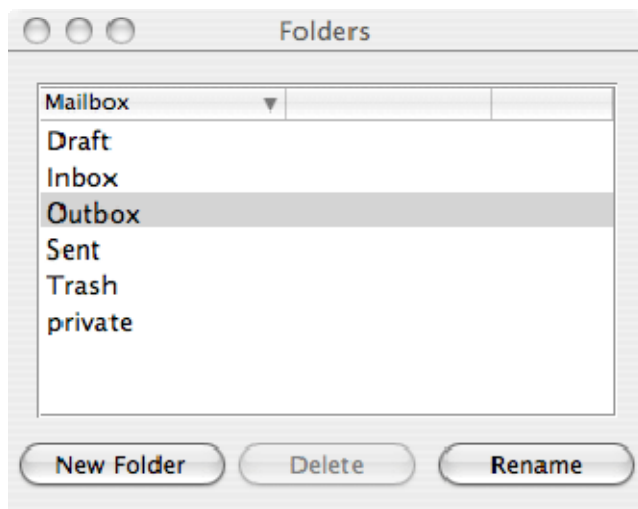
The SMS Manager window is split into menu bar, folder view, folder content and preview window. To manage your short messages you may:

Button	Description
 <b>Folders</b>	Manage folders
 <b>Settings</b>	Change SMS settings
 <b>New SMS</b>	Create new SMS messages
 <b>Reply</b>	Reply to SMS
 <b>Forward</b>	Forward SMS


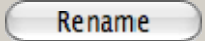

 <b>Move to...</b>	Move SMS to a folder
 <b>Delete</b>	Delete SMS
 <b>Send/Recv</b>	Send and receive SMS (if supported)
 <b>Addresses</b>	Manage Phone book contacts on SIM

### 1. Folder

By using this menu, you may change the folder structure of the SMS Manager:



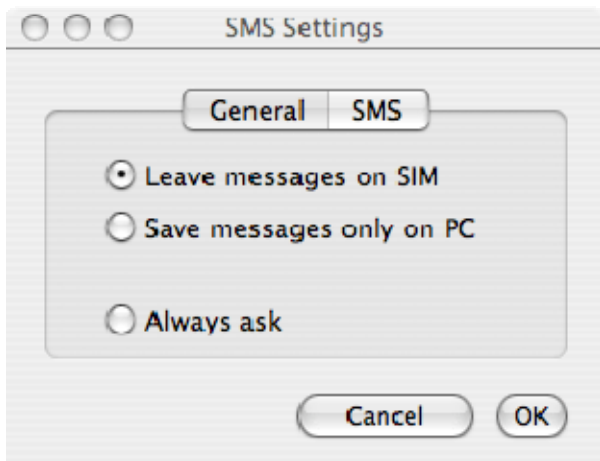
[Image 17]

Button	Description
	Creates a new folder, name has to be unique
	Renames an existing folder
	Removes an existing folder (including the messages)

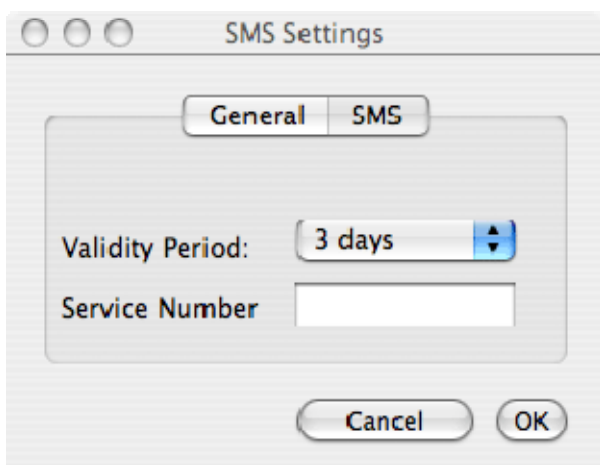
PLEASE NOTE: Predefined folder can't be deleted or modified.

### 2. Settings

The settings window lets you change the deletion mode when retrieving an SMS. You may choose whether to delete an SMS from the SIM and only store it in the SMS Manager, to keep this SMS on the SIM or decide whether this should be asked every time a message is received from a device.



[Image 18]



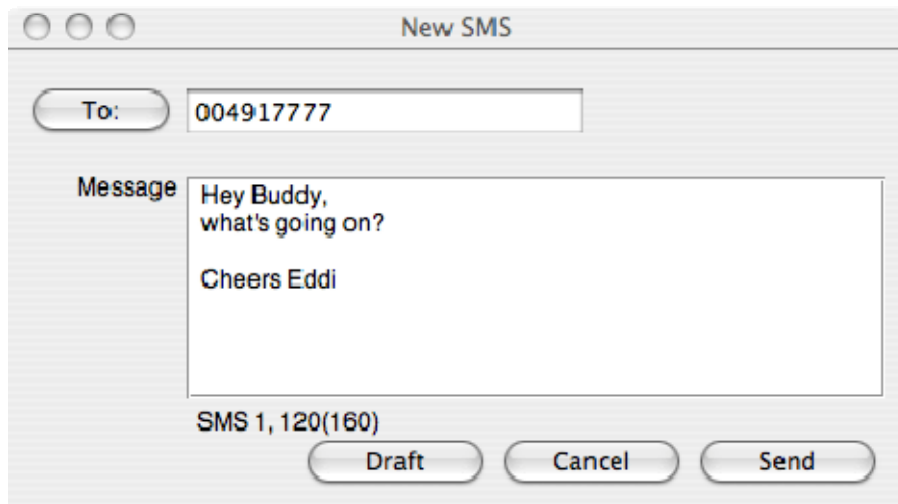
[Image 19]

### 3. New SMS

The "New Message" window is used to enter the SMS text. You may also enter texts by copy & paste from other applications. The status bar at the lower right corner indicates the length of the SMS for your convenience: the first number tells you how many parts the SMS consists of (one part has max. 160 characters/unicode70), the second number counts down from 160/70 characters. The number in parenthesis () counts the total number of characters.

The recipient for your SMS has to be entered in the "To" field. This can be either entered by typing digits or by clicking the "To" button to select a recipient from the address book.

Just select an address and click OK. To send the message click "Send/Receive".



[Image 20]

#### 4. Reply

Highlight a message to which you want to reply, e.g. in the inbox folder, then click the "Reply" button. The "New Message" window opens and the recipient address is already filled in the "To" field. Continue as before when sending a new message.

#### 5. Forward

Highlight a SMS, which you want to forward. Click the "Forward" button. The "New Message" window opens, however the message text is already copied. Continue as before when sending a new message.

#### 6. Move SMS...

Highlight the SMS to be moved and click the "Move SMS" button. A small window opens that lets you select the destination folder. Select the folder to which the message should be moved, then click "Move".

#### 7. Delete

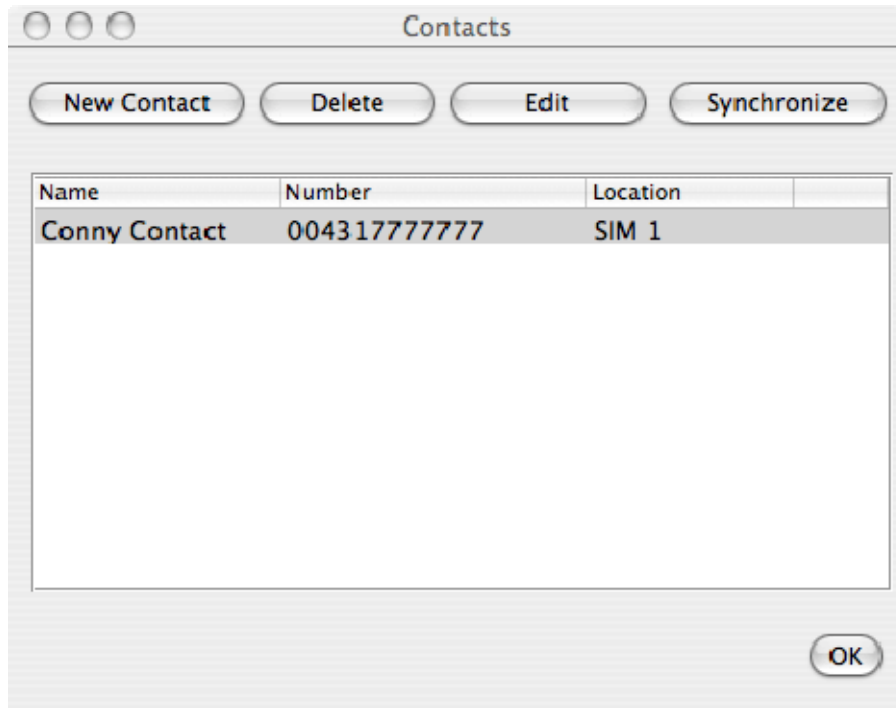
Highlight the SMS which you want to delete. Click "Delete" to remove the message.

#### 8. Send/Receive

Messages will be sent and/or received by clicking on this button.

## 5 Contacts

This button opens the address book. You may add new contacts to your personal address book or you may change existing addresses, delete addresses or exchange them with your SIM card and your e-mail client application, or export the data set.



[Image 22]

Button	Description
<b>New Contact</b>	New contact
<b>Edit</b>	Modify a contact.
<b>Delete</b>	Delete contacts, mark one or more and press on the button.
<b>Synchronize</b>	Synchronisation with the plugged device and the SIM card.